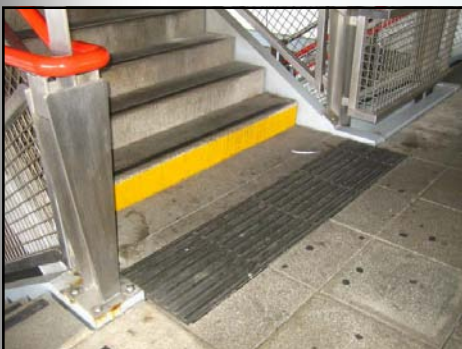


Tactile Paving Headaches...Not Anymore

Contech offer a unique co-extruded tactile surface system incorporating the latest development in a generation of technology and products from Visul Systems. It enables transport authorities and service providers to comply fully with the Disability Discrimination Act.



- ✓ No excavation required
- ✓ Conforms to DDA and DETR guidelines
- ✓ Excellent track record
- ✓ Quick and easy to install
- ✓ Cost effective
- ✓ Made from recycled products
- ✓ No heavy duty plant required
- ✓ Tiles do not crack like concrete equivalent
- ✓ Out performs concrete 7 times in wear testing
- ✓ Tiles can be installed in 'damp' conditions
- ✓ Tiles easy to cut and fit

THE NEED FOR SURFACE MOUNTED TACTILE PAVING

- ✓ The use of tactile paving ensures compliance with legislation **Disability Discrimination Act (1995)**.
- ✓ There is approximately **1 million blind** and partially sighted Pedestrian in the UK— **5% have no sight at all**.
- ✓ It promotes the social conscience of organisations and their responsibility to all of society as well **avoiding unnecessary claims**.
- ✓ Provides **user friendly** promotion of facilities and services due to its **aesthetic appearance**.

APPLICATIONS

Railway Platforms	Traffic Islands
Stair and Escalators	Kerbs and Steps
Ramps	Changes in Direction
Entrance Doors	Bus Stops
Car Parks	Ramps
Crossings	



For more information please contact:

Contech Accessories, Lough Feilim Industrial Estate, Carlow Road,
Tullow, County Carlow, Ireland

t: +353 (0)59 915 1350 **f:** +353 (0)59 915 2793

e: sales@contech-accessories.ie