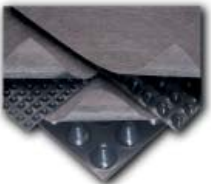


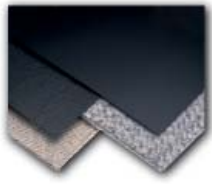


GEOSYNTHETICS PRODUCT RANGE

LANDFILL DRAINAGE & GAS DISPERSAL



GEOMEMBRANES



GEOTEXTILES



FINESSE POZIDRAIN

Finesse Pozidrain is a wide width preformed drainage & gas venting layer that replaces filter stone to give distinct cost benefits and provide geomembrane protection.

•Applications

A strong, robust drainage layer for collecting leachate and ground water in landfill containment. Landfill cap drainage layer. Gas venting system for dispersal of methane and other gases from the perimeter of landfills and below the capping layer. Capillary break layer in the restoration of contaminated land. *Leakdrain* is used for leakage detection within the landfill base lining.

Pozidrain is easily and rapidly installed without the need for specialist plant. The geomembrane drain has a built-in geotextile overlap.

•Manufacture and composition

The geomembrane drain consists of a HDPE cusped core bonded to a heat treated needle punched geotextile filter fabric. The geotextile is bonded to the core to prevent intrusion into and blockage of the drainage passages under the action of backfill material.

•Chemical resistance

Pozidrain has excellent resistance to leachate and other common chemicals.

Sizes:

4, 6, 7, 12 or 25 mm thick, 4.4 or 1.1 m width, 25 to 150 m lengths.



Finesse Pozidrain - typical landfill drainage and gas venting

FINESSE ALPHASINE & CLAYMAT

Finesse Alphasine geomembranes are manufactured from high quality virgin Polyethylene (PE) and Polypropylene (PP) in a quality controlled environment.

Finesse Claymat is a Geosynthetic Clay Liner (GCL). Sodium bentonite has long been recognised as the ideal impermeable barrier material. *Finesse Claymat* provides this in a convenient sandwich between two layers of geotextile. The result is a thin, flexible, clean, easily transported and installed lining system.

•Applications

To provide liquid and gas barriers in Waste Disposal & Landfill lining and capping, reservoirs, canals and ornamental ponds, environmental lining of roads and projects in contaminated land, waterproofing of structures.

•Chemical resistance

Finesse lining materials have high chemical stability, even at elevated temperatures. Resistant to all common chemicals, including petrol, oils and leachate. Test results available.

In many applications the performance of the *Alphasine* and *Claymat* lining is enhanced by the associated specification of the geomembrane drainage and protection layer *Finesse Pozidrain*.



Landfill lining with Finesse Alphasine



Abtex - typical membrane protection textile installation

ABC Ltd • E7 MELTHAM MILLS ROAD • MELTHAM • WEST YORKSHIRE HD9 4DS • UK • TEL:+44(0)1484 852096 • FAX:+44(0)1484 851562 • E-mail: geo@abgintd.com



GEOSYNTHETICS PRODUCT RANGE

STRUCTURAL DRAINAGE



CAVITY DRAINAGE SYSTEMS



GAS DISPERSAL SYSTEMS



FINESSE DECKDRAIN

Finesse Deckdrain is a high performance geocomposite drainage layer that directly replaces granular drainage stone.

•Structural drainage

Finesse Deckdrain is a robust preformed drainage system designed to relieve external water pressure from buried structures e.g. retaining walls, tunnels, roof gardens, buried tanks etc. It may be laid horizontally or vertically. *Deckdrain* provides high flow capacity and added protection to waterproofing systems. It reduces the amount of excavation and enables site material to be used as backfill.

•Block paving drainage

Finesse Deckdrain has been developed further for use in block paving. Its function is to collect and remove seepage water from the sand course below the block paving. Without *Deckdrain*, the sand can easily become saturated. In this condition the sand will liquify under traffic loading resulting in settlement and rutting. *Deckdrain* is a cost effective method of preventing this type of failure.

•Chemical resistance

Highly resistant to all common chemicals including fuels, salts, acids and alkalis.

Sizes:

4, 6, 7, 12 or 25 mm thick; 1.1 m, 2.2 m and 0.915 m width, 25 or 50 m lengths.



Buried reservoir drainage with Finesse Deckdrain

FINESSE CAVIDRAIN

Finesse Cavidrain is a preformed cavity drainage system designed to relieve water penetration from basements, buried structures and under ground car parks. Suitable for new and existing structures.

Traditional methods of ground water exclusion are difficult to install reliably in the modern deep basement with piled slabs and secant piled walls. *Cavidrain* is a waterproofing system that enables fast track construction by eliminating wet trades and removing the waterproofing installation from the critical path.

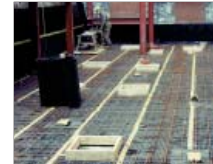
Cavidrain maximises the available internal space. It is very easily and quickly installed, making *Cavidrain* a very cost effective waterproofing system.

•Tunnel Drainage

Finesse Cavidrain provides a drainage layer to collect infiltration water from behind tunnel linings. *Cavidrain* may be used alone or form part of a system incorporating geomembranes. Typically the *Cavidrain* is fixed to the excavated face of the tunnel. Shotcrete will adhere to the back of the *Cavidrain* sheet. *Cavidrain* is used in road tunnels, mine shafts, interceptor sewers, etc.

Sizes:

3, 5, 10 or 20 mm thick, 1.1, 2.2 m and 0.915 m width, 20 m lengths.



Basement waterproofing & drainage with Finesse Cavidrain

FINESSE GASFLOW

Finesse Gasflow is a high strength, robust, preformed geocomposite that replaces pipe and filter stone by creating the void for the collection and safe venting of gases under buildings.

Gasflow consists of a cusped HDPE orange core of special chemical resistance, bonded on one or both sides to a non-woven needle punched geotextile.

The core profile has dimples on one side only to maximise gas collection from the subgrade. The other side of the core is flat to provide added protection to the gas membrane. The geotextile is compatible with all types of soil and it has an extremely high inflow rate to ensure the gas is collected quickly. The high efficiency and minimal thickness of the *Gasflow* layer reduces the amount of excavation (and the disposal of contaminated subgrade) below the finished floor level.

•Applications

Venting of methane, carbon monoxide, radon etc. from below sub-structures, basements, car parks, etc.

•Chemical resistance

Finesse Gasflow has excellent resistance to methane, petroleum, heavy metals and other contaminants.

Sizes:

6, 7, 12, 25 or 50 mm thick, 1.1, 4.4m or 0.915m width, 50m lengths. *Gasflow* is also available in strips.



Finesse Gasflow - typical gas dispersal system installation



GEOSYNTHETICS PRODUCT RANGE

LAND & TURF DRAINAGE



EROSION CONTROL SYSTEMS



ASPHALT REINFORCEMENT



FINESSE TURFDRAIN FINESSE FILDRAIN

•Turf drainage

Finesse Turfdrain is a preformed drainage system suitable for high performance drainage of grass playing surfaces and amenity areas. The drain can be installed on existing surfaces and those newly formed. Being 25mm thick, *Turfdrain* is installed very quickly in a 35 mm silt trench and the surface is immediately usable upon completion.

Sizes:
100 to 250 mm height and 50 m lengths.

•Land drainage

Finesse Fildrain is a high strength geocomposite drain that replaces conventional French drains. Significant cost savings can be made by eliminating expensive graded stone. *Fildrain* enables excavated material to be used as backfill. It consists of a cusped HDPE core, surrounded by a geotextile filter with or without a pipe sleeve.

•Applications

Landscape drainage, French drains and cut-off drains for the collection and transportation of leachate, ground water and gases from the perimeter of landfills.

•Chemical resistance

All *Finesse* drains are resistant to all common chemicals including leachate.

Sizes:

7, 25 or 50 mm thick, 0.3 to 4.4 m width, 50 or 100 m lengths.



Sports turf drainage with Finesse Turfdrain

EROSION CONTROL PRODUCTS

A comprehensive range of environmentally friendly erosion control materials, biodegradable or non-biodegradable, seeded and unseeded, for surface protection and structural stability of soil slopes. The Environment Agency considers silt laden run-off from exposed soil to be a pollutant. The following products will ensure instant protection and long term vegetation.

Erosamat Type1 & 1A are low cost biodegradable blankets made from jute.

Erosamat Type 2 are heavy duty, long life coir biodegradable erosion mats.

Erosamat Type 3 is for permanent erosion control, comprising a dense mass of PP fibres thermally bonded together to form a tough and flexible erosion mat.

G-mat is a natural fibre biodegradable mat incorporating grass or wildflower seeds.

Vesoweb is a honeycomb mattress of interconnecting strips that form pockets to hold and strengthen the infill material. Ideal for severe erosion problems on steep slopes. *Vesoweb* is also used to strengthen crushed stone foundations of access roads etc.

Webwall is an environmentally friendly modular retaining wall that utilises low grade fill to create a planted and truly green front face.



Access road with Erosoweb

ROTAFLEX

Rotaflex is an asphalt reinforcing system comprising grids of glass fibre coated in PVC and laminated into a polyester geotextile.

On site experience since 1987 and extensive research by Major Road Laboratories in Europe have demonstrated the benefits of *Rotaflex* to help eliminate reflective cracking, reduce rutting and extend fatigue life of a pavement. The *Rotaflex* glass fibre grids, installed below the wearing course, provide maximum strength even at very low strains. The composite textile provides a stress absorbing layer and prevents water penetration.

Use of *Rotaflex* allows the overlay thickness to be reduced, enabling further savings to be made in kerbing and accommodation works. The increased life using *Rotaflex* can save one or more future overlays.

•Applications

Overlays to Highways, Airfields, Car Parks etc. Reinforcement of new pavement construction.

•Chemical resistance

Rotaflex is not affected by all common chemicals associated with roads. Glass fibre and polyester do not melt in contact with hot bitumen.

Sizes:

2.03 m width, 50 m & 75 m lengths.



Typical Rotaflex installation

ABC Ltd • E7 MELTHAM MILLS ROAD • MELTHAM • WEST YORKSHIRE HD9 4DS • UK • TEL:+44(0)1484 852096 • FAX:+44(0)1484 851562 • E-mail: geo@abgintd.com