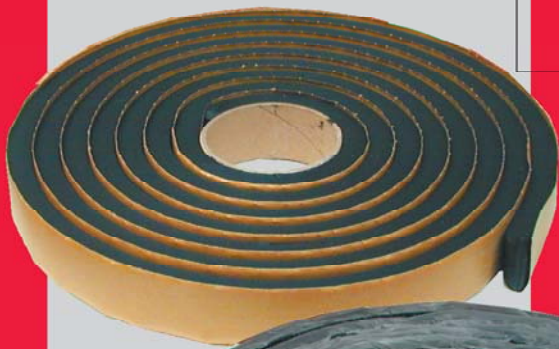


Waterstop BT 2025 S

Waterstop BT 2025 S plus + BigStop



BT 2025 S

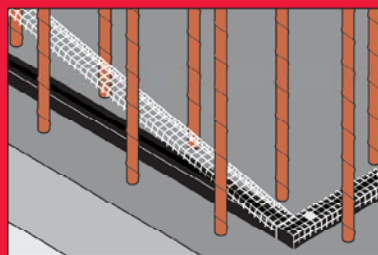
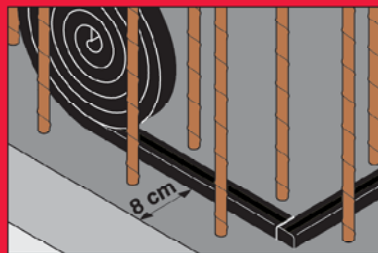


BT 2025 S plus

high swelling capacity ✓
active seal effect ✓

Waterstop BT 2025 S has been in use for construction joint waterproofing for 15 years. Waterstop BT 2025 S consists of 75% Sodium Bentonite and 25% butyl rubber. Upon hydration with water a high swelling capacity is developed. If the swelling process is unrestricted, the increase in volume is at least 400%. Once encapsulated inside the concrete, a highly effective seal with self-healing properties is formed.

Waterstop BT 2025 S is permanently ductile and stable. The use in changing water levels is well established and confirmed by tests carried out by the MFPA-Leipzig.

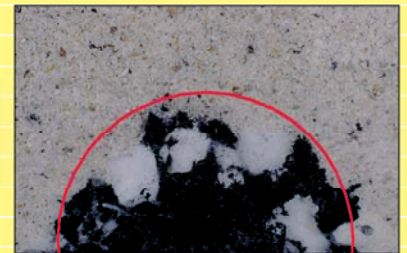


Waterstop BT 2025 S plus is the version for all weather conditions. Waterstop BT 2025 S plus is covered with a 100% organic protective film which prevents premature swelling. The disintegration process of the protective film is triggered upon hydration.

Technical Details

How it works

Waterstop BT 2025 S has a hydraulic swelling behaviour and penetrates cracks and voids. Its volume increases by at least 300% once the swelling process is unrestricted.



Test certificates

MFPA Leipzig

Building Inspectorate Test Certificate.

MFPA Leipzig

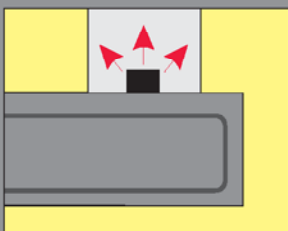
Test of the remaining activation behaviour of Waterstop BT 2025 S for the installation in changing water levels.

MFPA Leipzig



Test of the swelling behaviour of Waterstop BT 2025 S exposed to liquids with different PH and oils.

Institute for Hygiene

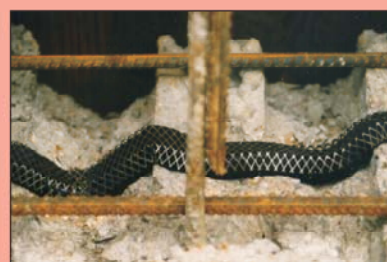
Sanitary drinking water test of Waterstop BT 2025 S in construction joints.



Bentonite expanding seals

	Discription	Item No.	Packaging
	Waterstop BT 2025 S 20 x 25 mm	21111510	1 box = 6 rolls of 5 m each = 30 m
	Waterstop BT 2025 S plus 20 x 25 mm	21111520	1 box = 6 rolls of 5 m each = 30 m
	Waterstop BT 1015 S 10 x 15 mm	21111210	1 box = 12 rolls of 6.08 m each = 73 m
	Waterstop Fixing Mesh individual length L = 1.00 m	21191120	1 box = 30 pcs = 30 m
	Bigstop Bentonite Expanding Seal 30 x 40 mm, colour blue	21111310	1 box = 3 rolls of 3 m each = 9 m
	Bigstop Fixing Mesh individual length L = 1.00 m	21191140	1 box = 9 pcs = 9 m
	Waterstop Levelling Compound for extremely rough surface	21133100	1 box = 20 cartridges
	Fixing Plugs ø 6 mm, L = 55 mm	21193130	1 box = 100 pcs
	Capping Nails for nail gun, L = 37 mm	21193220	1 box = 100 pcs

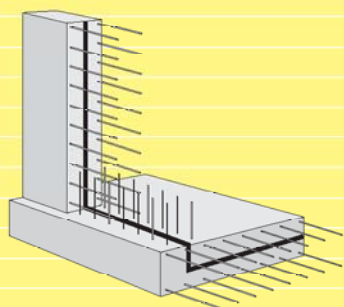
Waterstop BT 2025 S perfectly adapts to the joint surface.



Bigstop is recommended for extremely rough surfaces, e.g. joints bordering bored pile walls. With a cross section of 30 x 40 mm, Bigstop has a considerable swelling capacity.

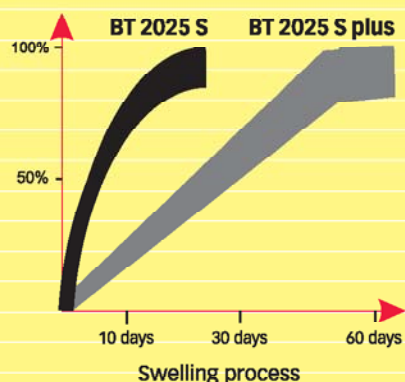


Installation



Place Waterstop in the centre of the construction joint with a minimum of 8 cm from the edge. Tightly butt coil ends.

How it works



Specifications

_____ m of horizontal and vertical construction joints to be waterproofed with Waterstop BT 2025 S according to the manufacturer's installation guidelines.

Make: Waterstop BT 2025 S